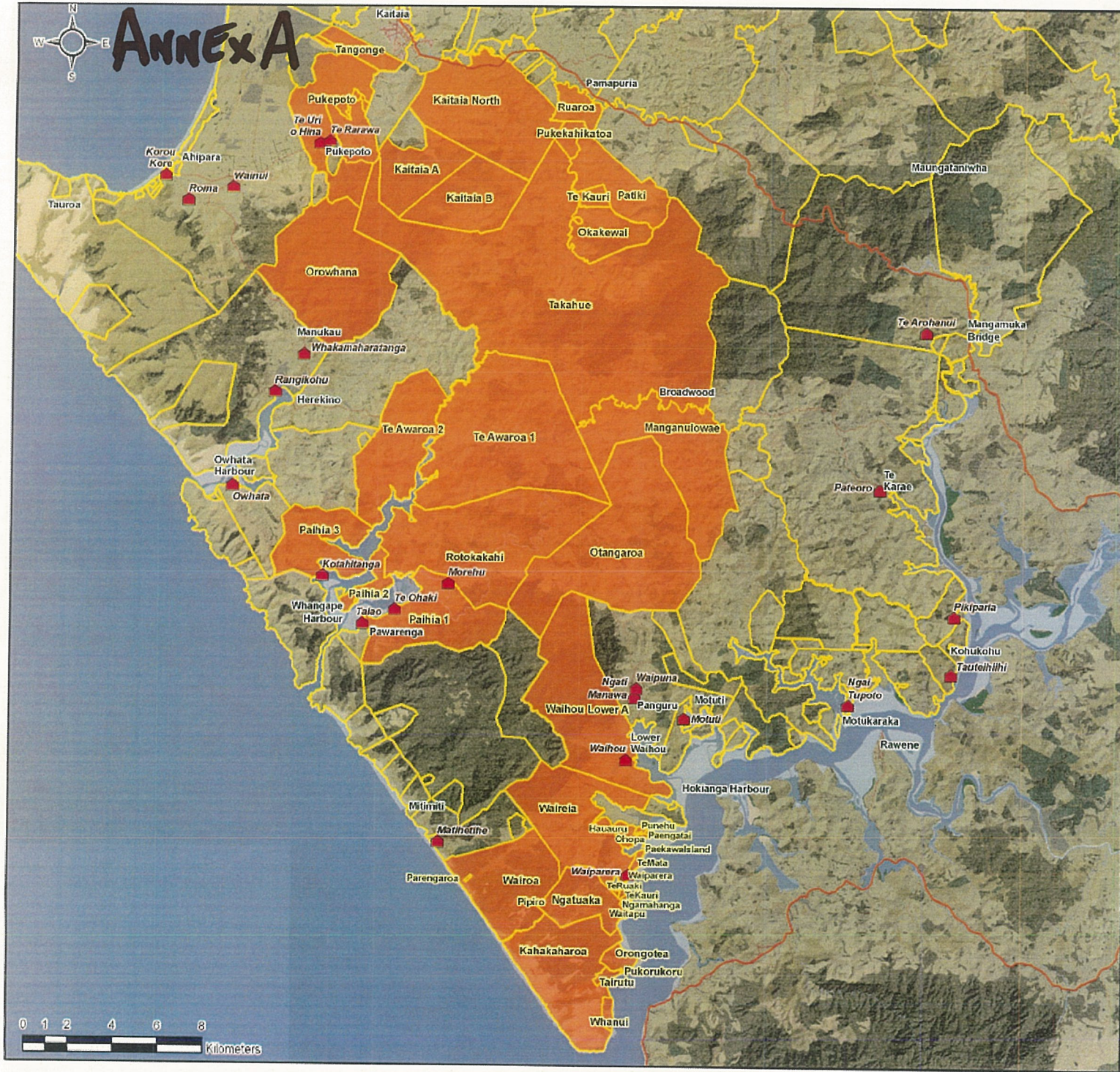


# ANNEX A



**Legend**

- Marae
- Highways
- Early Land Blocks
- Tahawai hapu interests

Te Raranga areas of interest and sites of significance mapping project

## Interests of Tahawai hapu of Te Raranga

### Narrative

Tahawai is a hapu of Te Raranga and its interests can be defined from Pukepoto across to Hekinga. In many cases these interests were shared with other Te Raranga hapu. In a small number of cases lands were split between Te Paau and Tahawai. These included Pukekahikatoa, Ruaroa and Patiki blocks. The descendants of the Tahawai representatives identified by the Native Land Court are affiliated to Te Raranga marae today.

Created: August 2011  
for Te Runanga o Te Raranga

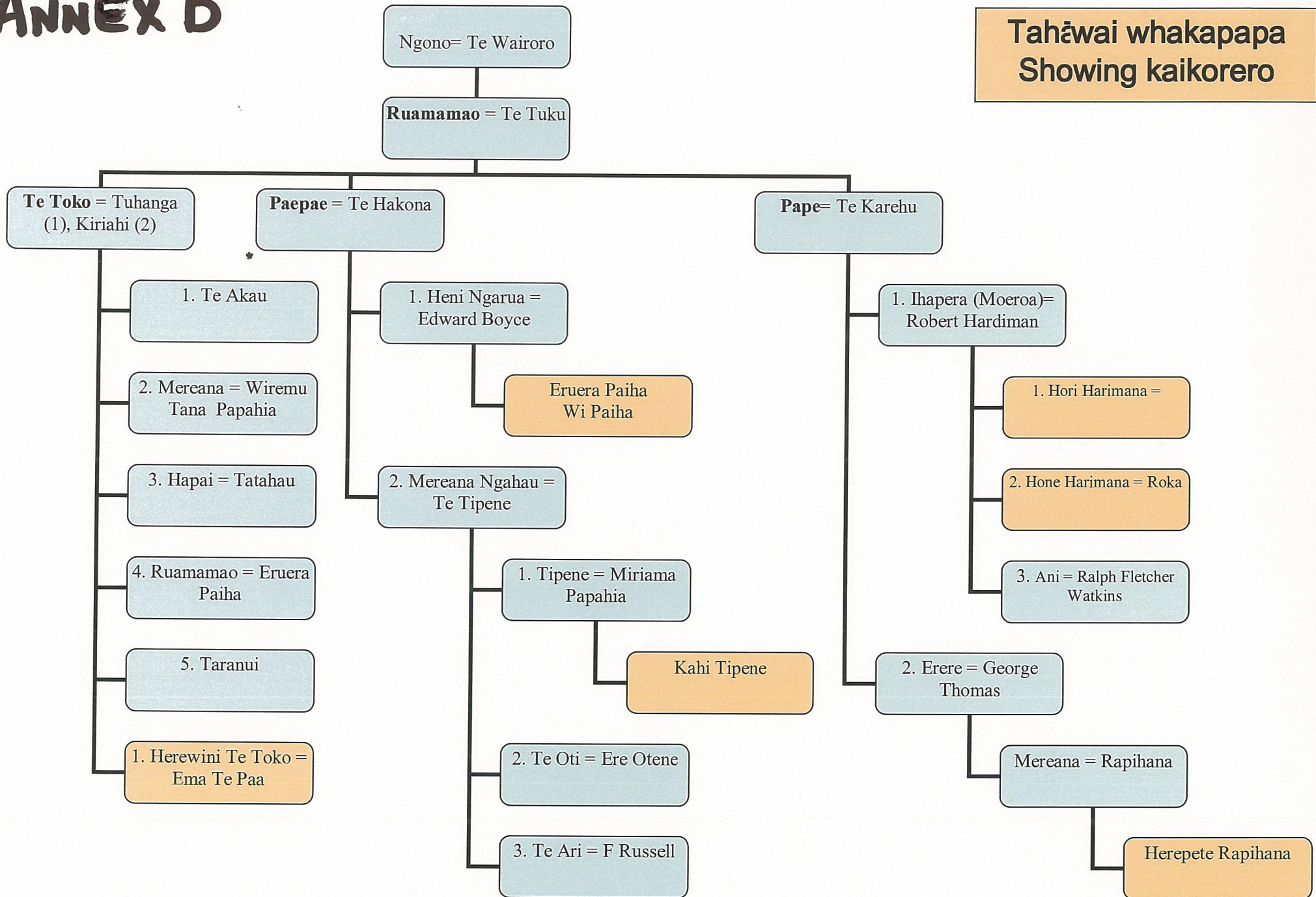
Block data - Te Runanga o Te Raranga  
Terrain image - Geographix Ltd  
Highway data - LINZ  
Hydrology - LINZ

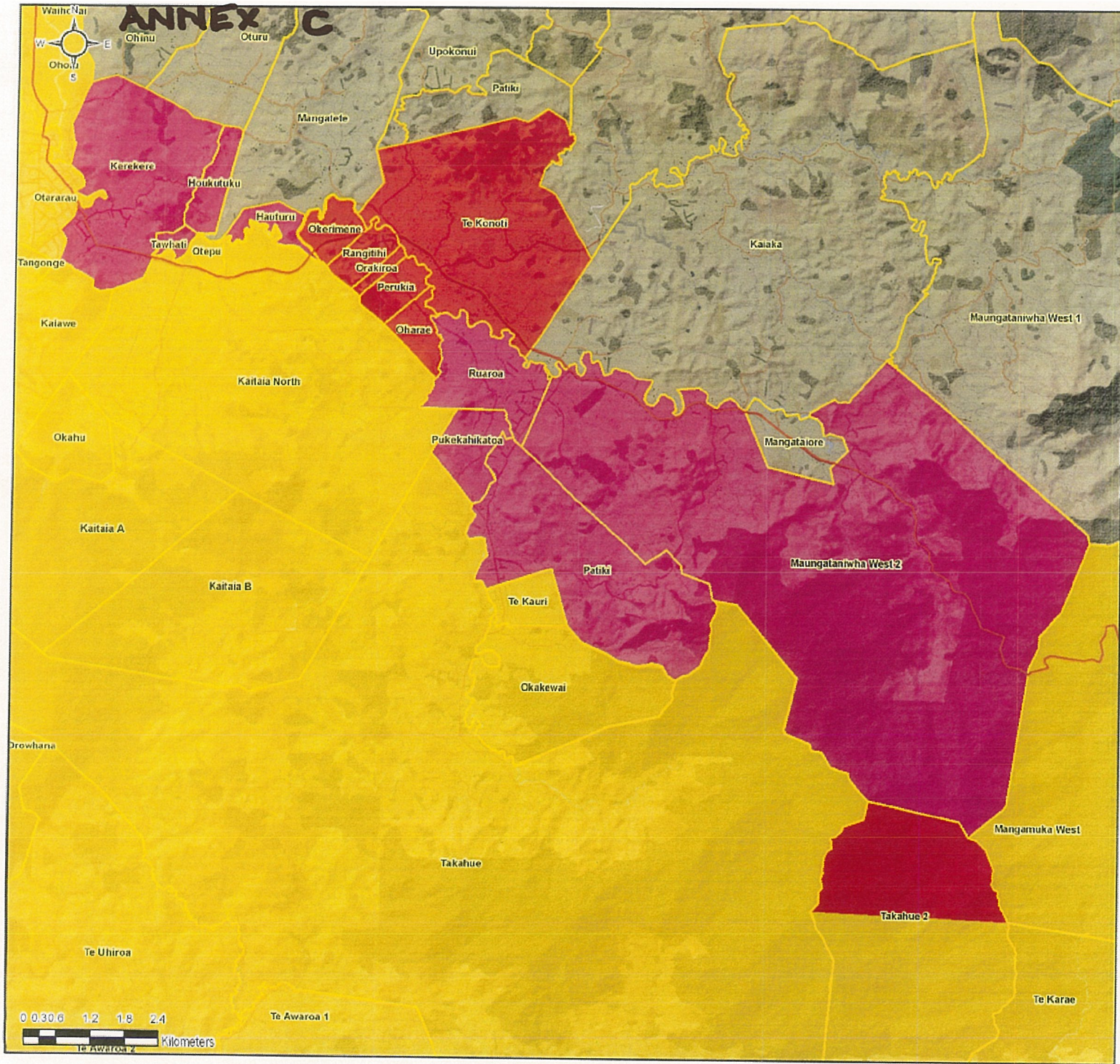
Map Production - Nathan Kennedy



# ANNEX B

## Tahāwai whakapapa Showing kaikorero





**Legend**

- Highways
- Early Land Blocks
- Te Rarawa and Paatu Interests
  - Paatu
  - Te Rarawa/Paatu
  - Te Rarawa

Te Rarawa areas of interest and sites of significance mapping project

## Te Rarawa and Paatu Interests

### Narrative

The earliest land transactions in Te Hiku o Te Ika before the signing of Te Tiriti o Waitangi involve Te Rarawa hapu in and around Kaitiaki. These transactions were regarded as tuku whenua and included the Kerekeru, Otamarua, and Tangopu blocks. They were led by Te Rarawa rangatira Panukareao.

In the 19<sup>th</sup> century Te Paatu was referred to as a hapu of Te Rarawa. The role of Te Paatu and other Te Rarawa hapu were contested when the Native Land Court began determining ownership of the Kaitiaki and Takahue lands.

In 1867 a Te Rarawa chief Tamaho Te Huhu held hui with the people of Kaitiaki and the Victoria Valley to discuss their land claims. Despite some opposition it was generally accepted that Tamaho had established a claim to the area south east of Kaitiaki. He later commissioned a survey of the land, which became the Kaitiaki block, but this precipitated a boundary dispute between Te Rarawa of the Ahupua, Herekino and Whangape districts, and Te Paatu.

When the survey reached a certain point it was challenged by Te Paatu who sought to halt it proceeding any further. The dispute escalated with both sides amassing war parties in the area.

Resident Magistrate White and his two Assessors from the Native Land Court mediated between the opposing parties and a boundary for the survey line was eventually agreed with the northern boundary of the Kaitiaki block from Okerimene to Oharae providing a dividing line between Te Rarawa and Paatu.

In the Takahue claims all of Takahue block was awarded to Tahawai and Te Uri o Hine, with Takahue 2 was divided between Ihatai and Te Paatu. The Maungataniwha West 2, Pafiki, Pukekahikatoa, and Ruaroa blocks included both Te Paatu and other Te Rarawa hapu interests. Okakewai was awarded to Te Uri o Hine, and Tahawai, and Te Kauri was awarded to Te Uri o Hine, Tahawai, Ngari Te Ao, and Te Tahukan, all hapu of Te Rarawa.

In the Maungataniwha West claim the Court determined that the summit of Maungataniwha was the natural boundary between Te Paatu and Te Rarawa.

Created: August 2011  
for Te Runanga o Te Rarawa

Block data - Te Runanga o Te Rarawa  
Terrain image - Geographix Ltd  
Highway data - LINZ  
Hydrology - LINZ

Map Production - Nathan Kennedy

